

Circumference of cylinder is 180mm.
Both main and differential feed dogs are installed in the small cylinder.
Additionally, UT device is equipped.

CYLINDER

Short distance from needle drop point to front of cylinder.

Therefore, even if sewing cuffs of sweat shirts or children's cloths, it is easy for the operator to handle fabric.

Needle guard driving (front & rear) separately from looper holder

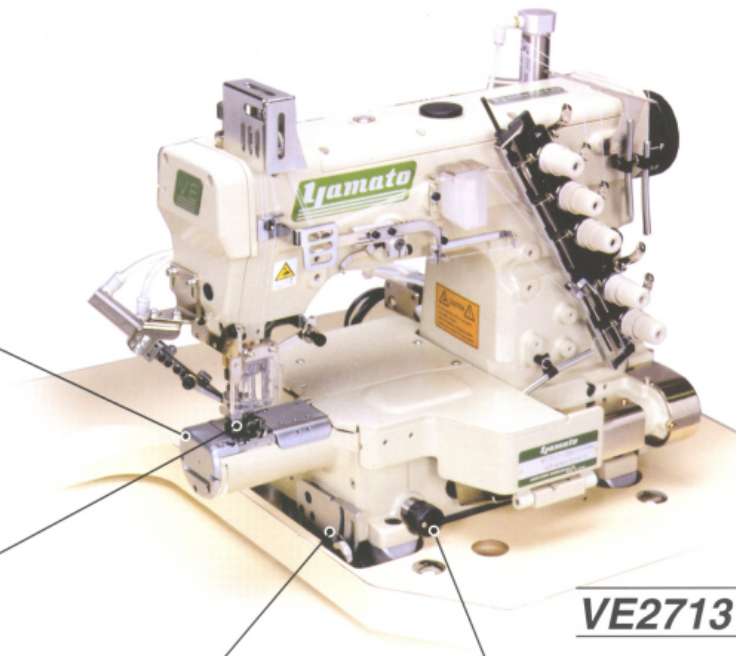
NEW NEEDLE GUARD MECHANISM (Patented)

Adjustable vertical position and angle

Stitch length can be quickly and easily adjusted by lever. Stitch condense can be obtained

Fine adjustable stitch length by adjusting knob.

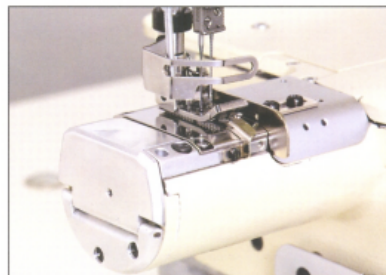
NEW FEED DRIVING MECHANISM (Patented)



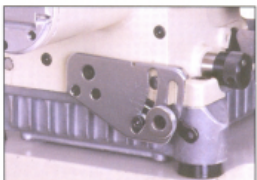
VE2713



VE2713: FOR COVERING



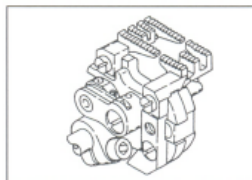
VE2711: FOR HEMMING



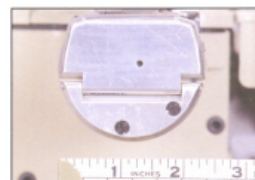
STITCH LENGTH ADJUSTING LEVER



ADJUSTING DIFFERENTIAL FEED



FEED DRIVING MECHANISM



CIRCUMFERENE OF CYLINDER :180MM