

# STH-8BLD-3

## Specifications

Variety	STH-8BLD-3	
Number of needle	Single needle	
Max. sewing speed	2,000(s.p.m.) / 2,400(s.p.m.): 8mm or less	
Max. stitch length	25/64" (10 mm)	
Clearance under presser foot	by knee	33/64" (13 mm)
	by hand	21/64" (8.5 mm)
Needle bar stroke	1-5/16" (33.2 mm)	
Needle(standard)	DPx17 (standard #22) or, 135x17 (standard #140)	
Thread	#8 (standard)	
Hook	Large horizontal axis hook (2.0 times)	
Amount of lift of walking foot	7/64"-7/32" ( standard 1/8")	
	2.7 - 5.5 mm (standard 3.2 mm)	
Thread take up lever	Slide type	
Lubrication	Hand type	
Bed size	18-25/32"x 7" (477 x 177 mm)	
Working space	10-5/32"x 4-21/64" (258 x 110 mm)	
Motor	Clutch motor	
Net weight(Head only)	29Kg	

**NOTE**

- (1) Speed depends on threads, materials and type of operation
- (2) Specifications subject to change without notice

## Variety of special gauge parts

Parts No.	Parts Name
18087	Feed dog
18088	Feed dog(Thin needle)

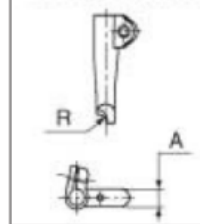
## Special presser foot (for cording work)

Vibrating P.F.No.	11890	11891	11892	11895	11896
Lifting P.F.No.	11900	11901	11902	11905	11906
Size A (mm)	4.5	4.5	4.5	4.5	4.5
Size B (mm)	5.2	5.2	5.2	5.2	5.2
Size R (inch)	1/8"	5/32"	3/16"	1/4"	5/16"
	(mm)	3.2	4	4.8	6.4

Vibrating P.F.No.	11910	11911	11912	11893
Lifting P.F.No.	11920	11921	11922	11903
Size A (mm)	6.2	6.2	6.2	6.2
Size B (mm)	6.6	6.6	6.6	6.6
Size R (inch)	1/8"	5/32"	3/16"	—
	(mm)	3.2	4	4.8

Vibrating P.F.No.	11894	11913	11914	11915	11916
Lifting P.F.No.	11904	11923	11924	11925	11926
Size A (mm)	6.2	6.2	6.2	6.2	6.2
Size B (mm)	6.6	6.6	6.6	6.6	6.6
Size R (inch)	—	1/4"	9/32"	5/16"	3/8"
	(mm)	6	6.4	7.1	7.9

Vibrating presser foot



Lifting presser foot

