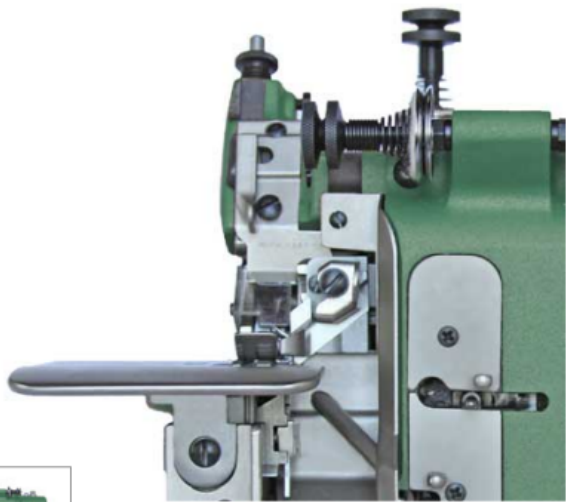


MG-3DRWL | NARROW DECORATIVE ROLLED HEM SEWING MACHINE

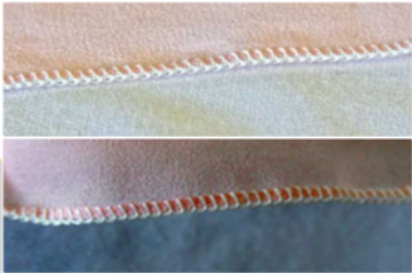


OPERATING SPEED	5500 RPM
STITCH WIDTH	3/32"
STITCH RANGE	8-30 SPI
STANDARD NEEDLE	MERROW 1SDT
MERROW NEEDLE RANGE	MERROW 0SDT-3SDT
FEDERAL STITCH TYPE	504
MOTOR REQUIRED*	Merrow M12, 1/2HP, 3450 RPM
NUMBER OF THREADS	3

Description

The Merrow MG-3DRWL sews a tight and narrow rolled hem on delicate fabrics such as silk, nylon tricot, and similar sheer material. It is equipped to sew long seam applications at high speed (5500 RPM).

Stitch Samples



MG-3DRWL Applications

NARROW, DECORATIVE ROLLED
HEM FOR SILK ROBE



The Advantage of the MG-3DRWL

The Merrow MG-3DRWL sews a tight and narrow rolled hem on delicate fabrics such as silk, nylon tricot, and similar sheer material. Like all Merrow MG Class sewing machines, the MG-3DRWL is engineered to sew consistently and uniformly, and will last for decades with routine maintenance.

WHY it's better

The MG-3DRWL sews at high speed (5500 RPM), but will not pucker or curl fabric during operation, resulting in a tight straight-hanging seam. It is engineered to handle delicate material and sews sheer and gossamer materials exceptionally well.

HOW it's better

The MG-3DRWL utilizes a specially adapted needle plate and presser foot finger which fold the material down before sewing, and sews a long and straight yet dainty seam.

WHERE it's used

Because of its fabric handling capabilities, the MG-3DRWL is used to sew delicate garments such as women's lingerie and sleepwear. It is also used as an edging machine for sheer curtains and other applications that use lightweight synthetic fabric.

MG-3DRWL Stitches



