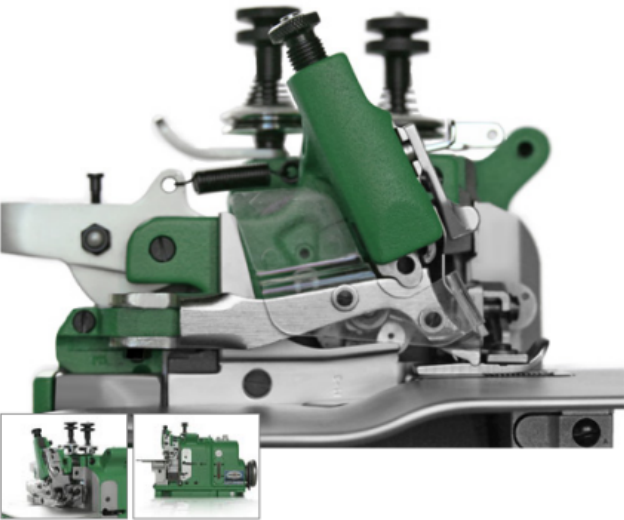


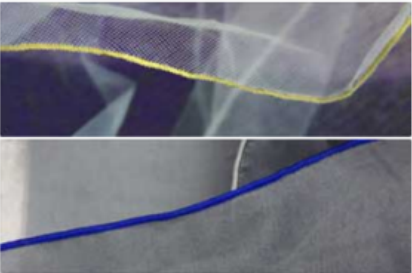
MG-2DNR-1 | Industrial Purl Edge Sewing Machine



Description

The Merrow Purl Stitching Machine (or merrowing machine) sews a narrow rolled hem on light to mid-weight fabrics. It can be ruffled to create a 'lettuce edge' look as well. Famous for it's accuracy, the Merrow Purl edge is unparalleled in the business.

Stitch Samples



OPERATING SPEED	5500 RPM
STITCH WIDTH	1/16" - 3/16"
STITCH RANGE	14 - 40 SPI (22 SPI Standard)
STANDARD NEEDLE	MERROW 2SDT
MERROW NEEDLE RANGE	MERROW 0SDT-4SDT
FEDERAL STITCH TYPE	502
MOTOR REQUIRED*	Merrow M12, 1/2HP, 3450 RPM
NUMBER OF THREADS	2-6

MG-2DNR-1 Applications



DECORATIVE PURL EDGE FOR COTTON TANK TOP



DECORATIVE PURL EDGE FOR FOLDING NAPKINS



DECORATIVE PURL EDGE FOR CREPE CHEMISE

The Advantage of the MG-2DNR-1

Merrow has refined the design of it's signature decorative edging machine over the past 70 years. Designers around the world use the Merrow Purl Machine to sew delicate rolled hems on wedding dresses, lingerie, evening wear and home decor. Built to run at 5500RPM the MG-2DNR-1 will add an unmatched edge at high speed to lightweight and medium weight fabrics.

WHY it's better

The stitch itself looks different from the imitation purl stitches. A Merrow purl stitch is tighter, it hangs straight on delicates, it appears sometimes as an extension of the material on which it's sewn. A Merrow purl stitch is perhaps the most elegant stitch in the world.

HOW it's better

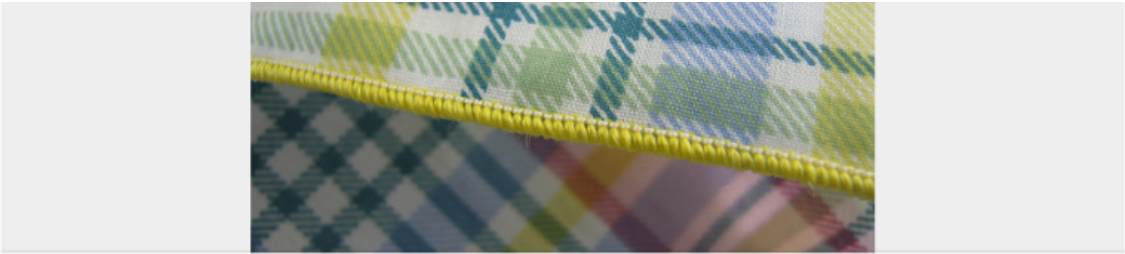
The precision of the MG-2DNR-1 is literally unmatched in the sewing machine world. Because of the unique cam drive and the hand crafted looper carrier and needle plate, this Merrow Machine sews a more delicate edge than an other sewing machine manufactured today. At high speed the machine maintains the critical tolerances between needle, needle plate and looper: allowing the product to look beautiful every time.

WHERE it's used

Often used in garment factories, sample rooms and custom tailor shops, this machine is now finding it's way into high-end cottage industries and low volume, high value production

MG-2DNR-1 Stitches





Notes | Link |

