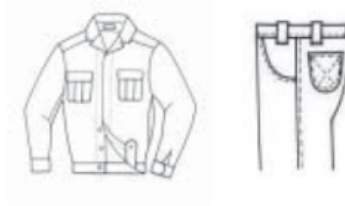


## LDA series

### Applications

- For sewing light to heavy weight materials
- Suitable for sewing shirts, sleep suit, jeans, pants, skirts, uniforms, heavyoveralls, raincoats, difficult to sew tubular products, etc.



### Features

- Fully automatic lubrication
- Clear, unobstructed view of work area for operator with ample work space to right of needles
- Easy access to stitch regulator and looper avoiding motion adjustment
- Oil flow window indicates oil circulation
- Non-slip belt drive to bed mechanism assures smooth, positive power feeding
- Under threading readily accessible through hinged covers

### Specifications (LDA-□)

Variety	L26-1	T26-1
Number of needle	Two needle	
Max. sewing speed	6,500 s.p.m.	5,000 s.p.m.
Max. stitch length	7/16" (2.5 mm)	11/64" (4.2 mm)
Clearance under presser foot	1/4" (6.4 mm)	5/16" (8 mm)
Needle bar stroke	1-1/16" (27 mm)	1-5/16" (33.3 mm)
Needle(standard)	TVx7 (#16) 149x7 (#100)	TVx3 (#21) TVx3 (#130)
Thread	#40 (standard)	#20 (standard)
Lubrication	Full automatic type	
Motor	Clutch motor	

NOTE

(1) Speed depends on threads, materials and type of operation

(2) Specifications subject to change without notice

### Needle gauge list

Variety	Needle gauge size
L26-1	3/32"(2.4mm) , 1/8"(3.2mm) , 5/32"(4mm) , 3/16"(4.8mm) , 1/4"(6.4mm) , standard 1/4"(6.4mm)
T26-1	3/16"(4.8mm) , 1/4"(6.4mm) , standard 1/4"(6.4mm)